

# Beginning June 1, 2019 SSI recipients may be eligible for **CalFresh Food Benefits**

There is **NO CHANGE** or reduction  
to SSI/SSP amounts



For more information, Click, Call or  
Come in to your county office to apply  
and find out more.



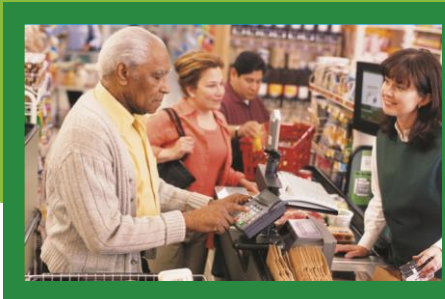
Click **GetCalFresh.org**  
to apply online



Call **1-877-847-3663**  
(FOOD)



Come in/find an office  
at **CalFreshFood.org**



**State of California  
Health and Human Services Agency  
California Department of Social Services**

Funded by USDA, an equal opportunity provider  
and employer.



For other languages, or reasonable  
accommodations, find an office at  
**CalFreshFood.org**. For speech and/or  
hearing assistance **call 711 Relay**.



Click **GetCalFresh.org**  
to apply online



Call **1-877-847-3663**  
(FOOD)



Come in/find an office  
at **CalFreshFood.org**

CONTACT YOUR COUNTY OFFICE AT:

**Yolo County HHSA  
(855) 278-1594**

## **DO YOU RECEIVE SSI? DON'T MISS OUT ON FOOD BENEFITS!**



## What is CalFresh Food?

CalFresh provides monthly food benefits for individuals and families with low income. CalFresh is California's Supplemental Nutrition Assistance Program (SNAP).

## Can I qualify for CalFresh Food if I already receive SSI?

Beginning June 1, 2019 SSI recipients may be eligible for CalFresh Food benefits.

## Does CalFresh Food replace my current SSI benefits?

There is **NO CHANGE** or reduction to SSI/SSP amounts.

## Why should I apply for CalFresh Food benefits?

### If you qualify, you can choose healthy food for yourself and your household!

Use CalFresh Food to buy fresh fruits and vegetables, whole grains, lean proteins and more.

### CalFresh Food is easy to use.

CalFresh Food benefits are issued monthly to eligible households via an Electronic Benefit Transfer (EBT) card. The EBT card can be used at grocery stores and farmers' markets that accept EBT.

### Restaurant Meals

If you are 60 years of age or older, disabled or homeless, you may be eligible to purchase prepared meals at certified restaurants in some counties.

## How much can I receive each month?

The amount of CalFresh Food benefits a household receives is based on household size, income, and monthly expenses, such as housing, utilities, and medical costs. The average amount nationally for an older adult or person with disability is \$105 – \$110 per month. The range is \$15 – \$192 per month.

## How long will it take to get CalFresh Food benefits?

**If eligible, CalFresh Food benefits will be received within 30 days.** Households may be eligible for expedited services (benefits within 3 days) if they have zero or very little money available.

**Three Year Certification** Households that only include older adults and/or people with disabilities with no earned income are eligible for a 36-month certification.



## Are there special considerations for people with disabilities?

Households with at least one older adult and/or person with a disability with verified out-of-pocket medical expenses over \$35 and less than \$155 a month can claim a Standard Medical Deduction of \$120. Eligible households can always claim actual expenses above \$155.

An Uncapped Shelter Deduction is allowed if the eligible household includes at least one older adult and/or person with a disability

## What if I need reasonable accommodations?

If you require assistance or need reasonable accommodations, please request help through your county office. To find your local county office, visit [CalFreshFood.org](http://CalFreshFood.org).

## How do I learn more?

Contact your county office.



Click [GetCalFresh.org](http://GetCalFresh.org) to apply online



Call 1-877-847-3663 (FOOD)



Come in/find an office at [CalFreshFood.org](http://CalFreshFood.org)